



El Dorado County Tea Party

Dr. Vicki L. Barber, County Superintendent

April 12, 2011



Schools are
in the People Business



Overpaid & Under Worked?

- **52 certificated staff for every 1,000 California students**
- **71 staff for every 1,000 is the national average.**
- **California ranks 50th of 50 states in staff-to-student ratios**



The closer you look, the worse
it gets....



The typical American school has:

- 34% **MORE** teachers than California
 - **50th in the nation**
- 40% **MORE** school site administrators
 - **48th in the nation**
- 75% **MORE** counselors
 - **50th in the nation**

...and twice as many high school teachers per student.



Our commitment to schools declines...



- As a percentage of Californian's personal income...

- 1972 = 5.6%
- 2005 = 3.8%
- 2007 = 3.7%



- **Loss 1.9 percentage points**
- This is prior to the loss of \$18 billion over the last two years (\$19 million in El Dorado County)
- 1% of California personal income = \$17 billion



K-12 Education Took Biggest Cuts



We may be committing less, but **our teachers are committing more...**

Annual Instructional Hours

Japan	524 hours
Denmark	640 hours
Australia	809 hours
Mexico	1040 hours
U.S.	1080 hours



How are schools
funded?



State Revenue & Property Taxes



- Amount differs by District
 - Now about 50% each, on average



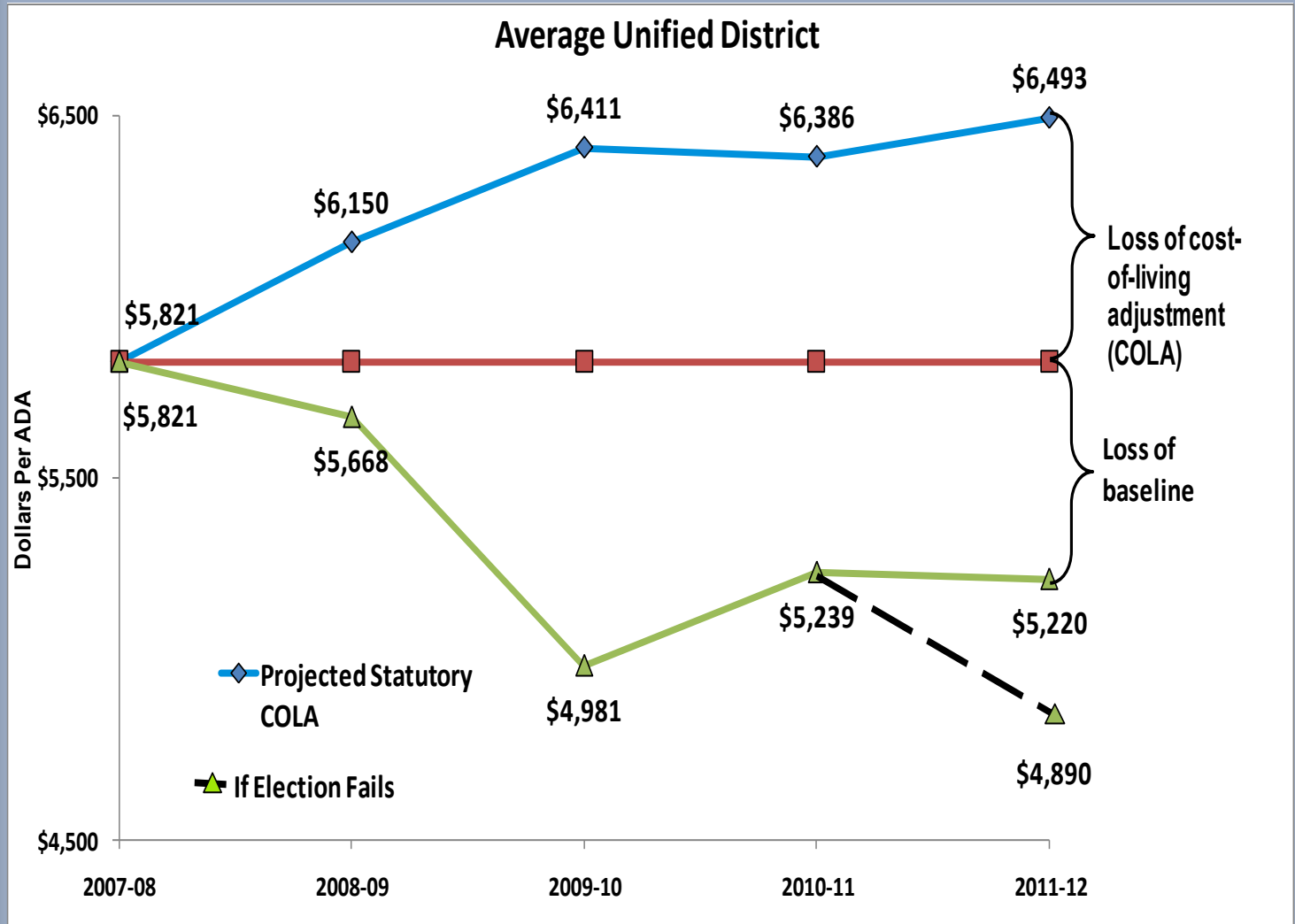
- Base amount per student
 - ADA, Average Daily Attendance
 - Elementary, Average \$6,210
 - High School, Average \$7,463
 - Unified, Average \$6,493



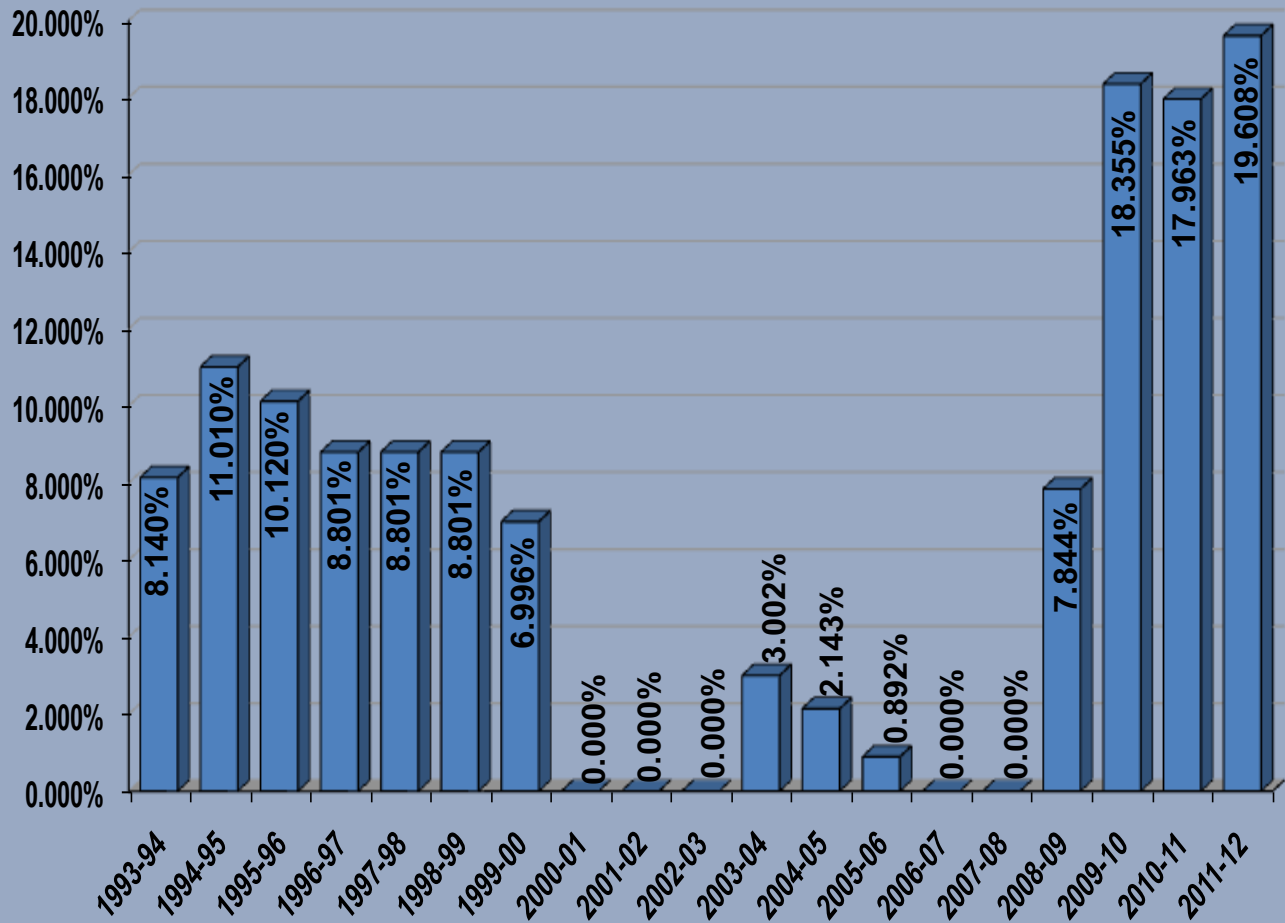
- We only get about 80 cents on the dollar
 - 17.963% deficit in 2010-11
 - 19.608% deficit proposed for 2011-12



Projected vs. Actual Funding Per ADA



School funding **deficits** come and go but we've never seen them this high





The Governor's Proposals for 2011-12



- **The Proposals**

- **Cuts – lots of them**

- **But with the acknowledgement that education has already taken more than its fair share of cuts**

- **Realignment**

- **To restore local control of service delivery and save the state money**

- **Continuation of taxes**

- **Temporary taxes would be extended by five years**



- **Basically the Governor has two plans:**

- **If the taxes are extended, the cuts are as budgeted in January**

- **Education would be flat funded for 2011-12**

- **If the taxes are not extended, an estimated additional \$9 billion in cuts would be needed, including large cuts to education.**





Budget Contingency Plan

- The Governor's Budget assumes that the temporary taxes are extended by the voters for five more years
- The Budget also proposes that additional reductions be made in the event that the tax extensions are not approved
- This leaves schools in a position of needing at least two plans
 - Option 1 – flat funding – continues the funding level contained in the enacted Budget for 2010-11 into 2011-12 – only expecting \$20 cut per student
 - Option 2 – a \$2 billion reduction in funding – results in a loss of about \$330 more per student for the average district – total \$350 reduction
 - **This means an additional estimated loss of \$8.5 million for El Dorado Schools**



Further Contingency Planning



- If tax extensions do not get on the ballot OR do not pass, then expect:

- Minimum of \$350 cut per student



- However, reductions may be much more with some speculation we may see \$700 to \$850 additional cut per student.



K-12 Education Took Biggest Cuts



General Fund Expenditures by Major Program Area

	Dollars in Billions				% Change 2007-08 to 2010-11
	2007-08	2008-09	2009-10	2010-11	
K-12 Education	\$42.5	\$35.5	\$34.6	\$36.3	<14.5%>
Higher Education	\$11.8	\$11.7	\$10.6	\$11.6	<1.4%>
Health and Human Services	\$29.7	\$30.9	\$25.0	\$27.0	<9.3%>
Corrections and Rehabilitation	\$10.2	\$10.3	\$8.2	\$9.3	<9.0%>
Natural Resources	\$1.9	\$2.0	\$1.9	\$2.0	8.3%



How is this affecting
El Dorado Schools?



Are we able to do
business as usual?

El Dorado County Schools

# of School Districts	
Elementary	12
High School	1
Unified	2
TOTAL	15

Size of School Districts	
Under 1,000	8
1,000 to 1,999	3
2,000 to 3,999	1
4,000 or more	3
TOTAL	15

# of Schools	
Elementary	29
Middle/Junior High	12
High School	6
Continuation	5
Charter	9
Alternative	9
TOTAL	70



Students Served by District From the littlest to the largest



October 2010 Count	
Silver Fork Elementary	12
Indian Diggings Elementary	18
Latrobe Elementary	171
Pioneer Union Elementary	397
Camino Union Elementary	449
Gold Trail Union Elementary	541
Gold Oak Union Elementary	550
Pollock Pines Elementary	699
Mother Lode Union Elementary	1,247
Placerville Union Elementary	1,258
Black Oak Mine Unified	1,639
Lake Tahoe Unified	3,878
Rescue Union Elementary	4,065
Buckeye Union Elementary	4,721
El Dorado Union High School	6,966
Total K-12 Districts	26,611
El Dorado County Office	1,118
Total	27,729



Note: Enrollment count does not include California Montessori Project Charter School in Buckeye Union Elementary



How About Consolidating Districts?



- School district consolidations provide an opportunity to increase revenue limit income and reduce local costs



- Current law (Education Code Section [E.C.] 35735, et. seq.) provides for a permanent increase to the base revenue limit



- Consolidations provide opportunities to capture economies of scale and reduce or eliminate duplicative functions





Why Look at Reorganization?



- Provide more options for students – improve educational offerings



- Consolidate some services, i.e., administration, pupil personnel services, library services, etc.



- Improve fiscal status – increase state aid and/or reduce expenditures



- Facilitate economies of scale



New or Consolidated



- **Consolidate districts by transfer of territory**
 - eliminate one district and transfer into existing district. District A becomes bigger, contracts continue in place
 - Can have a waiver to require a new governing board election.



- **Create a new district**

- Dissolve two or more elementary districts and create new one
- Initiated by the electorate or by majority of boards





Preliminary Revenue Analysis and Findings



- **School Services of California, Inc., computed 26 different district combinations**



- Small district combinations of less than 2,000 ADA
- Large district combinations of more than 8,000 ADA
- Geographic consolidations arranged by the two major local highways – Highway 50 (east/west) and Highway 49 (north/south)





Preliminary Revenue Analysis and Findings



- Other findings

- 11 district combinations generate at least a 5% increase
- The largest increases are from small size consolidations
- Full Report is on El Dorado County Office of Education website: www.edcoe.org





Community Decision Factors



- ❖ Greater Educational Opportunities for Kids?
- ❖ Greater Economies of Scale?
- ❖ Greater Opportunity to Manage Dwindling Resources?
- ❖ Opportunity to Capture Additional Revenue?
- ❖ Greater Opportunity to Focus on Areas of Expertise?
- ❖ School vs. District identity



Even with the Reductions in Funding.....



- How are our Schools in El Dorado County Doing?

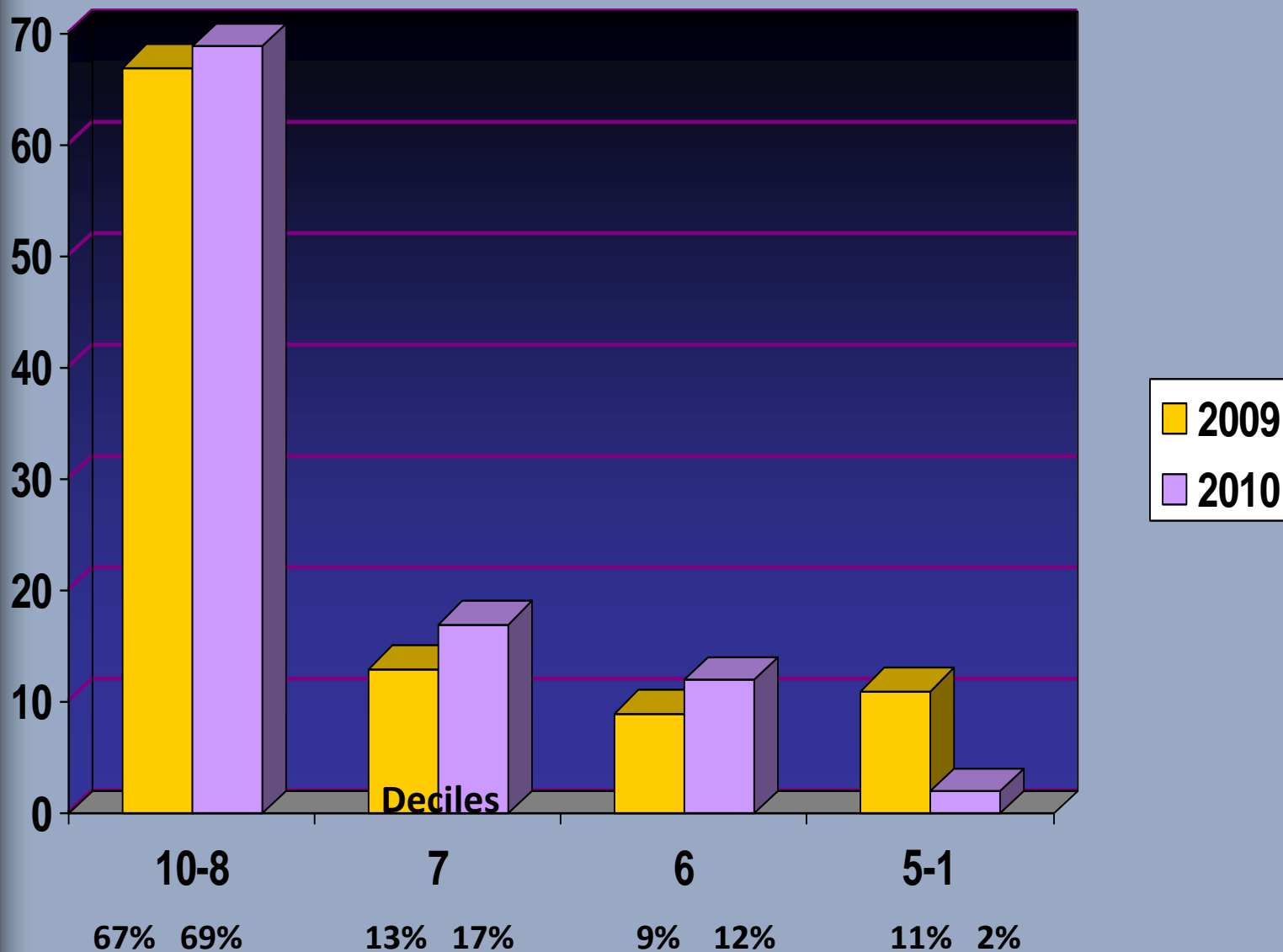


El Dorado County API School Ranking



- All schools in California are given an Academic Performance Index (API) Score
- The schools are then sorted from lowest to highest statewide
- The schools are then divided into 10 equal groups
- Decile 10 schools are the top 10% of the schools while Decile 1 schools are the bottom 10%

% of El Dorado API County Schools Scoring in Deciles 1 – 10





Student Achievement

- Over 2/3 of our schools are ranking in the top 3 deciles of the State.

CAHSEE COMBINED GRADES 10-12 RESULTS 2006-2009 (California High School Exit Exam) ENGLISH/LANGUAGE ARTS

	2007	2008	2009	2010
CAHSEE	# Tested % Passing	# Tested % Passing	# Tested % Passing	# Tested % Passing
El Dorado County	3,443 75%	3,290 77%	3,079 79%	3,013 80%
State of California	786,434 77%	794,772 61%	780,147 61%	769,677 63%

MATHEMATICS

	2007	2008	2009	2010
CAHSEE	# Tested % Passing	# Tested % Passing	# Tested % Passing	# Tested % Passing
El Dorado County	3,312 77%	3,142 79%	2,889 79%	2899 83%
State of California	795,336 58%	795,965 60%	781,791 61%	754,405 64%



El Dorado County's Recognized Schools



California Distinguished Schools
39 schools from 1988-2010



National Blue Ribbon Schools

- Louisiana Schnell School (Placerville USD)
- Blue Oak School (Buckeye USD)
- Rolling Hills Middle School (Buckeye USD)
- Lake Forest School (Rescue USD)
- Oak Ridge High School (El Dorado Union HSD)
- Sierra Elementary School (Placerville USD)



National Distinguished School Title I

- Camino Elementary School (Camino USD)
- Sierra Elementary School (Placerville USD)





Thank You!